

The Partnership

August 2009

From the Headmaster's Desk:

The 2009-10 school year has started with great anticipation and excitement about what the Lord will do through us this year. As I walk the halls of our school, I feel a positive energy among our staff and students. We have a school of which to be truly grateful and proud.

Achievement Testing Results:

Byne Christian School administers the widely respected Stanford Achievement Test from K-5 through eleventh grade. For the 2008-09 school year, the school scored a solid 78% average. The elementary grades scored an outstanding 93%. Congratulations to our teachers and students for a job well done.

What is Byne Christian School all about?

As a Christian academic institution, it is imperative that we teach...

- A Christian Worldview in every academic setting.
- With a quality academic expectation for every student.
- With the end goal of college acceptance for every one of our graduates.

In a way that draws our students and families to Jesus Christ, the author of all academic information.

We are not here to take the place of parents, but we are “all about” helping parents raise their children academically, spiritually, and socially. We do not take this responsibility lightly. Pray that the Lord will empower us to be very effective in assisting parents in this awesome responsibility.

We encourage you to take advantage of the \$500.00 Student Referred Incentive Program:

We want to help you with the tuition costs this year and get the word out about Byne Christian School. For every new student that you, a current Byne parent, refer to the school, you will receive a \$500.00 discount on your child's 2009-10 tuition. Several families have already taken advantage of this offer by referring their friends to the school. Conditions do apply.

Thank you for your support and prayers.

David B. Bess
Headmaster

REMINDER to all students who drive on campus.



A parking permit is **\$5.00**. You need to have this in your car by Monday, August 24th. Remember you are to park in your assigned parking space **ONLY!!**

***PARKING ON CAMPUS IS A PRIVILEGE!!
DON'T LOSE IT.***

DON'T FORGET TO SAVE THE FOLLOWING:

- Campbell Soup Labels
- BoxTops
- Sonic Receipts
- Nestle Water Labels
- Capri Sun Drink Packets (empty and cut bottom and wash before bringing to school)
- Community Coffee Cash for Schools UPC
- Coke product lids



Please remember your tuition payments are due each month. A \$25.00 late fee will be applied to your account if payment is not received by due date.

CANDY FUNDRAISER
AUGUST 24TH TO SEPTEMBER 9TH

Starting Monday, August 24th, your child will be bringing home one box (50 bars) of chocolate candy bars. There will be prizes for selling boxes of candy bars.

Sell 1 box of 50 bars – Ice Cream Party

Sell 2 boxes (100 bars) - Enter in a drawing for \$50 cash

Top Sellers in K4 to 5th grade and 6th to 12th will win **CASH**

Each bar sells for \$1 and our school retains 50% profit.

Thank you in advance for your continued support!!

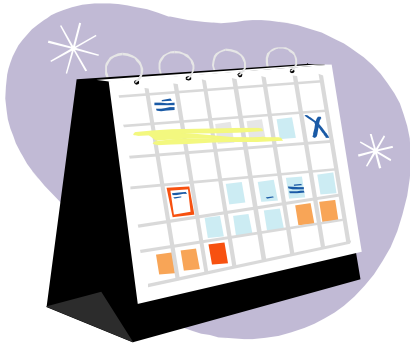


MARK THESE DATES:

August 24th to September 9th—Candy Fundraiser

August 27th—SAINTS Meeting

September 7th—Labor Day (no school for teachers/students)



September 11th—Progress Reports

September 19th—Miss Byne Pageant

September 26th—Fall 5K/1 mile Run

October 1st & 2nd—Teacher In-Service (no school for students)

October 2nd & 4th—Annual Horse Show

October 9th— Early Dismissal

October 12th—Report Cards to go home

October 22nd—SAINTS Meeting

October 27th to 31st—Exchange Club Fair—Booth

December 5th—Christmas Tea & House Tour

December 6th—Spaghetti Dinner

December 19th January 4th- Christmas Holidays (no school)

GIRL TALK

First meeting is September 2nd at

3:30 pm in Room 622

All girls in middle and high school are
invited to attend.

If you shop for school supplies at Office Depot, don't forget to credit to Byne Christian School.

School's ID Number: 70024537

Don't forget to use your Publix scan card. If you don't have one, stop by the office.

ATHLETIC NEWS:

Students must have a current physical, a signed a GCAA liability form, and proof of insurance prior to sports involvement. The forms are available in the School Office.

These forms must be on file in the office. This information is good for one year from the date the doctor signs it.

ALL ATHLETICS MUST DO THIS FIRST BEFORE PARTICIPATION

The Athletic Fee is \$25.00 per sport per child. {For example: Your child plays JV basketball and varsity basketball, the athletic fee will be \$25.00. Your child plays varsity basketball and soccer, the athletic fee will be \$50.00}. All athletic fees must be paid once the student makes the team.

HELP US GET THE WORD OUT ABOUT BYNE WITH SIGNS.

The school has been in need of effective signs for a number of years. We have finally been able to address this need. We are in the process of ordering signs for the School Gym and Family Life Center. However, before we do, we need to have all funding secured.

The signs will say: Byne Christian School
"Home of the Saints"

Check out our website on the home page, click "signs"

Each letter cost \$50.00 -

Forms are in the office—stop by and fill one out or we can email you a form.

THANKS IN ADVANCE FOR YOUR SUPPORT!!!