

The Partnership

March 2010

From the Headmaster's Desk:

What Will Byne Christian School Look Like in the Future?

We are proud of our 27 year heritage. However, we are “*Leaning Into the Future*” at BCS. This Thursday, March 4th, at 7:00 pm we will present to our parents, church members, and visitors a three year vision for Byne Christian School.

Following the vision presentation, we will discuss the Corporate Giving for Education scholarship opportunity. There will be a Q&A time at the end of the meeting. This meeting will last approximately one hour in the church sanctuary. Those parents that do attend will be given a homework pass for their child. We will suspend homework for that evening for all classes.

BCS Early Application fee deadline extended until March 8th

We will again make it affordable to re-apply by requiring only \$50.00 of the re-application fee up front. After March 8th, we will ask you to pay the full re-application fee for 2010-11.

Corporate Giving for Education Scholarship Information

Every parent at BCS should take advantage of the Corporate Giving for Education scholarship opportunity for them. This can help you with this year's tuition and fees. We have attached some information and forms to this Partnership. Call us if you have questions.

School Signs Installed on the Gym

We are going forward with the installation of school signs on the Family Life Center/ School Gym. A sign will be installed on the Ledo Road side and one on the 82 bypass side of the building. A plaque will be hung in the school office listing donors for these signs.

Technology helping BCS “Lean into the Future”

Check out Byne Christian School on Facebook. We have a new promo video you should watch. Our new website, www.bcssaints.org, is a big hit with everyone. We also have a Twitter account at “*bcssaints*”. We live streamed some basketball games at the end of the season. The school also purchased our first Mac computer.

It is exciting to be a part of all the good things the Lord is doing on the BCS campus. Help us “get out the Light” and tell a friend about Byne.

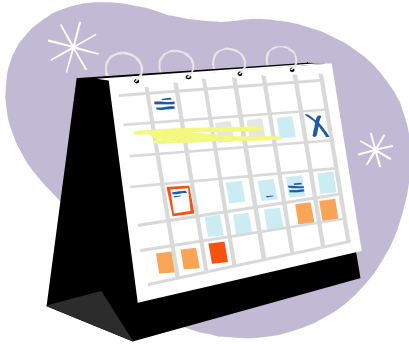
“Leaning Into the Future”

David B. Bess
Headmaster

“Shaping Tomorrows Christian Leaders Today”

MARK THESE DATES:

February 26th—Senior/Faculty Basketball Game + AUCTION



March 4th- "Leaning Into the Future" presentation

March 5th + 6th—Yard Sale

March 8th—Letter of Intent and \$50 due for 2010-2011

March 12th—Early Dismissal at 12:00 pm

April 2nd—Good Friday— School Holiday

April 5th to 9th—Easter Break

April 17th—Junior/Senior Dinner

May 22nd—Class of 2010 Graduation Ceremony

**SUMMER DAY CAMP APPLICATIONS IN THE SCHOOL OFFICE FOR
STUDENTS WHO HAVE COMPLETED K4 THROUGH 6TH GRADE.
MAY 24TH TO AUGUST 6TH**

DON'T FORGET TO SAVE THE FOLLOWING:

→Campbell Soup Labels UPC

→BoxTops for Education

→Sonic Receipts

→Community Coffee Cash for Schools UPC

→Capri Sun Drink Packets (*empty and cut bottom and wash before bringing to school*)

If you shop for school supplies at Office Depot, don't forget to credit to Byne Christian School. **School's ID Number: 70024537**

Don't forget to use your Publix scan card. If you don't have one, stop by the office.

Harvey's now requires a scan card. Stop by their service desk and tell them to activate yours for Byne Christian School.

Corporate Giving for Education

Scholarships for Private Education

Byne Christian School Parents,

We can not emphasize enough that you need to take advantage of this scholarship opportunity today. The state of Georgia is helping parents pay for private school education. They have set aside \$50 million worth of tax credits per year. When this amount of credits is spent, it is gone until next year. Do not miss out!

Check out the SSO (School Scholarship Organization) the we are affiliated with at <http://corporategivingforeducation.com/> . Read the Q&A attached to this letter. Call us if you have questions.

Basically, here it is in a nutshell:

1. Married couples can donate up to \$2,500.00 to Corporate Giving for Education in the name of Byne Christian School, indicating your child's name on the "Pay It Forward" form.
2. You must be a Georgia resident, your child must be eligible to attend a public school in Georgia, and you must have Georgia taxable income.
3. Corporate Giving for Education will match your donation with another Byne student of equivalent value (minus 10% admin. fee).
4. You will get a tax credit from Georgia for the value of your donation in the form of a reimbursement check. You will also get a tax deduction on your federal income tax.
5. Corporate Giving for Education will match your donation with a corporate donation (not guaranteed, but 100% matching to date). This will double your donation/scholarship for your child.
6. If you do not have the money up front, you may pay by the month or ask a relative for the money.
7. You can encourage other friends that do not have children at Byne to donate in the name of your child.
8. "C" corporations may donate up to 75% of their Georgia state income tax to Byne Christian School.

The easy steps to take advantage of this scholarship opportunity are listed on the attached Byne Christian School SSO Checklist.

Parents, please look into this and take advantage of it. It will help offset the cost of your child's tuition at Byne Christian School. We will discuss this opportunity in more detail at the March 4th "What Will BCS Look Like in Three Years" vision meeting. See you there.

Georgia Education Private School Scholarship Credit

Frequently Asked Questions

How does it work?

A taxpayer in Georgia can “redirect” part of their Georgia income tax to a student scholarship organization (SSO) to provide scholarships for students to attend private schools. Byne has decided to use Corporate Giving for Education as our specific SSO, This “redirect” occurs because the tax payer receives a 100% tax credit against their GA tax liability for the amount donated to Corporate Giving for Education. Therefore, money that was going to pay taxes has been “redirected” to support Byne Christian education for those in need.

How much can I donate?

- A single taxpayer can “redirect” up to \$ 1,000.
- A married couple filing jointly can “redirect” up to \$ 2,500.
- A married couple filing jointly, that pays AMT (alternative minimum tax) can “redirect” up to \$ 2,500 and save \$725 (due to a tax savings of \$ 3,225 for both federal and state).
- A “C” Corporation can “redirect” up to 75% of their total Georgia state tax liability.

Can corporations, partnerships, Sub-S corporations, or LLCs donate?

Yes. A “C” corporation can “redirect” up to 75% of their Georgia income tax liability and also take a federal income tax deduction for the contribution.

Since partnerships, S corporations, and LLCs pay no Georgia income tax directly, these contributors are subject to the same limits as an individual, whether as a single taxpayer (up to \$1,000), or a married couple filing jointly (up to \$ 2,500).

Why did Byne decide to use Corporate Giving for Education when there are 24 SSO’s in Georgia?

Corporate Giving for Education guarantees they will match your donation with another student scholarship and the other student scholarship with your student of equal value. Therefore, you will be getting a scholarship for your child. They also approach corporations for donations. They try to match your scholarship with a corporate scholarship donation. This will double your scholarship for your child. They do not guarantee this, but have done so with all of their scholarships to date.

What does the SSO get out of this arrangement?

The SSO, in this case Corporate Giving for Education, keeps 10% of all donations for administrative costs. This means that a donation of \$1,000.00 result in a \$900.00 scholarship.

Will this trigger an audit of my return?

No. The credit is applied against your Georgia income tax liability, and is pre-approved by the state of Georgia. It is processed just like a tax payment.

Can I specify that my donation be used for scholarships at Byne Christian School?

Yes. This program allows one to specify the school at which your contribution will be used for scholarships.

Can I specify that a particular student receives a Byne scholarship?

No. Donors may specify which qualified school they desire the contribution to be distributed, but not for specific children or families. However, Corporate Giving for

Education will match your donation with another student donation of equal amount. Therefore, you are in essence donating for your child. This is legal and approved.

What if I make a tax credit eligible contribution but do not owe that much in Georgia taxes?

If your Georgia income tax liability is less than the tax credit available to you, you may carry the excess forward for five years. If the amount of your tax credit, income tax withholdings, and estimated income tax payments exceed your Georgia income tax liability, the state of Georgia will refund the excess to you.

When will I receive the state tax credit for my contribution to Corporate Giving for Education?

For contributions made during the current calendar year, the tax credit will reduce the current year's tax liability.

When is the scholarship money distributed?

As soon as the money is received from the Corporate Giving for Education, it will be added to the back end of a student's tuition payments. If received prior to May 31st, it will be awarded to the student account in that current school year. Money donated after June 1 will be awarded to the student account in the following year and applied at the back end of the student's tuition payments.

What happens to the money if I have over paid my child's tuition account when the scholarship money is applied to their account?

The school will refund to the parent any over paid funds above the cost of tuition and fees.

What happens to scholarship money if I withdraw my child from Byne or they are asked to leave Byne Christian School?

Any scholarship funds remaining in a student's account upon withdrawal or expulsion will become funds for general scholarship needs of Byne students.

Who qualifies for the financial aid?

Any Georgia resident attending a private accredited school and has a state income tax may qualify.

Can the same student receive scholarship money for more than one year?

Yes. Once a scholarship is awarded, the student will continue qualifying for the aid as long as the student is attending a Byne.

How much is a typical scholarship?

Award amounts are dependent on both the amount of funds available.

Will the school spend scholarship money for anything else?

No, this money is specifically for tuition and fees. The school is setting up a separate checking account to keep these funds out of the general budget of the school or church.

How do I apply?

See the attached information.

If you have any additional issues or questions please contact the school office or Corporate Giving for Education. You may also check these websites: the Georgia Department of Revenue website, <https://etax.dor.ga.gov/inctax/taxcredits.aspx>, or the Georgia Department of Education http://public.doe.k12.ga.us/pea_policy.aspx?PageReq=PEAHB1133.



BYNE CHRISTIAN SCHOOL

SSO CHECKLIST

- Complete the form (Georgia Form IT-QEE-TP1)
- In regards to the contribution amount (Section A), please put an amount that you are able to give.
- Make sure that in Section A.3 that “Corporate Giving for Education” is the designated student scholarship organization
- Make sure that in Section A.4 that the Taxpayer ID is 58-0648671
- Date and sign Section C (If you are a corporation please list your name, title and phone number)
- Make a copy of the form.
- Make your check payable to “Corporate Giving for Education.” in the amount you indicated in contribution amount section.
- In the memo section of your check write “Byne Christian School”
- Enclose a note that you are designating your contribution to “Byne Christian School” (note attached)
- Mail the following items (copy of the pre-approval form, check and note) to:
Corporate Giving for Education
407 Forrest Lane
Gainesville, GA 30501

Please remember that the Department of Revenue has maximum aggregated amount of \$50 million per tax year, and the timeliness of you completing the pre-approval form is very important.



0906304011

Georgia Form IT-QEE-TP1 (Last Rev. 10/09)
Qualified Education Expense Credit Preapproval Form
Georgia Department of Revenue Version 9

Please print your numbers like this in black or blue ink

9 8 7 6 5 4 3 2 1 0

This form is the first step in applying for the income tax credit for qualified education expenses. The form is filed by the taxpayer and is used to request preapproval of an intended contribution to a student scholarship organization.

Enter for Contributor:

- INDIVIDUAL FILING SINGLE OR HEAD OF HOUSEHOLD
- INDIVIDUAL FILING A MARIED JOINT RETURN
- INDIVIDUAL FILING MARRIED SEPARATE RETURN
- C CORPORATION
- SUBCHAPTER S CORPORATION FOR GEORGIA PURPOSES, PARTNERSHIP, OR LIMITED LIABILITY COMPANY

FIRST NAME OR NAME OF ENTITY MI TAXPAYER IDENTIFICATION NUMBER

LAST NAME IF INDIVIDUAL SUFFIX

IF INDIVIDUAL FILING JOINT, FIRST NAME OF JOINT FILER MI IF INDIVIDUAL FILING JOINT, I.D.# OF JOINT FILER

LAST NAME OF JOINT FILER SUFFIX

ADDRESS (NUMBER AND STREET or P.O. BOX)

CITY STATE ZIP CODE

TAX YEAR END OF CONTRIBUTOR 1 2 3 1 2 0 1 0 CALENDAR YEAR IN WHICH CONTRIBUTION WILL BE MADE 2 0 1 0

CONTACT PERSON (FOR CONTRIBUTIONS BY ENTITIES) TELEPHONE NUMBER

- The contribution must be preapproved and the donation made to the Student Scholarship Organization by the end of the calendar year.
- The taxpayer must add back to Georgia taxable income the amount of any federal charitable contribution deduction taken on a federal return for which a Georgia qualified education expense credit is allowed.
- The tax credit shall not be allowed if the taxpayer designates the taxpayer's qualified education expense for the direct benefit of any dependent of the taxpayer.
- The student scholarship organization must be on the Department of Education's website before this form is filed.

A. CONTRIBUTION AMOUNT

1. The amount of the contribution the taxpayer intends to make... 00

2. [For corporate contributors only] Enter 75% of the corporation's estimated income tax liability... 00

3. Name of student scholarship organization listed on the Department of Education's website.
Corporate Giving for Education

4. Taxpayer I.D.# of student scholarship organization... 2 6 4 4 8 7 9 2 5

Corporate Giving for Education

Scholarships for private pre K-12 students



Pay it Forward® Scholarship Request

Name of Individual Donor or Corporation: _____

If corporation, contact person & title: _____

Phone: _____

Email: _____

Students the donor would like considered for scholarships:

(Corporate Giving for Education makes final decisions about scholarship recipients and awards.)

Name: _____ Dependent? YES NO

Name: _____ Dependent? YES NO

Designated School: Byne Christian School

School Address: 2832 Ledo Road, Albany, GA 31707

Please mail or email this form to:

Corporate Giving for Education

407 Forrest Lane

Gainesville, GA 30501

770-534-3611

info@CorporateGivingForEducation.com



CORPORATE GIVING FOR EDUCATION

NOTE

Name: _____

Check Number: _____

Please designate for:

***BYNE CHRISTIAN SCHOOL
2832 LEDO ROAD
ALBANY, GA 31707***

SAINTS YARD SALE
Preview -Friday, March
5th 7:00 pm to 9:00 pm
Open Sale—Saturday
March 6th
6:00 am to Noon

BYNE CHRISTIAN SCHOOL and
ALL AMERICAN FUN PARK presents
BCS Nights

On the following evenings, you purchase a ticket for only \$6.00
→Unlimited Golf
→ Unlimited Laser Tag
→Unlimited Max Flight

BCS Nights are: May 4th

For every ticket purchased a homework pass will be given out
when a student brings their ticket to the School Office on the
next school day.

Purchase tickets at the All American Funpark.
Would you like to bowl while you are there? \$4.00 a game

CANDY BAR FUNDRAISER

We still have boxes of the candy bars to sell. If you would like to get a box, please drop by the School Office and pick one up. If you have money to turn in from selling the candy bars, please send it in.

Thank you!!!

GIRL TALK

Wednesdays 3:30 pm in Room 622

All girls in middle and high school are invited to attend.

**DISCOUNT CARDS
ARE HERE!!
ONLY \$10.00 EACH**

 Buy A Single Sonic Burger At Regular Price Get 2nd FREE [1 Per Visit] • Valid At Participating Locations	 10% OFF Check [Excluding Alcohol] 3007 Kensington Ct • Albany	 Buy 1 Regular Roast Beef Sandwich Get 1 Free [Limit 1 Per Visit] 1105 N Slappey Blvd • Albany
 FREE Chips And Salsa With Purchase Of An Entree [1 Per Table] 2821 Ledo Rd • Albany	 \$3.00 OFF A Large Pizza • \$2.00 OFF A Medium Pizza • When Purchased At Regular Menu Price 2406 Dawson Rd • Albany	 10% OFF Any Purchase [Valid For Card Holders Meal Only Excluding Alcohol] 637 N Westover Blvd • Albany
 FREE Chips And Reg Size Fountain Drink W/ The Pur. Of A Reg. Or Lrg. Sub Or Entree Salad [1 Use Per Visit • Excl. Every Day Value Menu] 1406 Dawson Rd and 1222 N Westover Blvd • Albany	 10% OFF Total Purchase 2548 Dawson Rd • Albany 1101 Dawson Rd • Albany	 50¢ OFF Any Menu Item 2416 Dawson Rd • Albany
 ALL AMERICAN FUN PARK Buy 1 Game Of Mini Golf Get 1 FREE [Limit 1 Per Visit] 2608 N Slappey Blvd • Albany	 \$3.00 OFF Any One Regular Priced CD or DVD \$12.99 Or Greater 2601 Dawson Rd • Albany	 10% OFF Any Service Or Reg. Price Purchase 1359 Ushy 82 W • Leesburg
 \$1.00 OFF Purchase Of \$7.00 Or More 718 N Westover Blvd • Albany	 10% OFF Purchase 2401 Dawson Rd Ste A2 • Albany	 Buy A Large 2 Topping Pizza For \$9.99 [Pick-Up Only Coupon Code GA2600] 711 N Westover Blvd • Albany
 10% OFF Total Food Purchase [Excluding Alcohol • Dine-In Only] 1533 Us Highway 19 S • Leesburg 2610 Gillionville Rd • Albany	 10% OFF Total Purchase 2734 Ledo Rd • Albany	 10% OFF Purchase 2726 Ledo Rd • Albany

Present coupon before ordering. Valid for cardholder only. Not to be used with other discounts. One use per visit per day unless specified. Free items must be of Eq./Less. value. Other restrictions may apply. Valid only at participating locs. go to www.gapreferred.com using code A3MZ for those locs.



***What about a Saints Cookbook?
Only \$10.00 at the School Office.***

***Stop by and get a copy for yourself
and for someone else.***